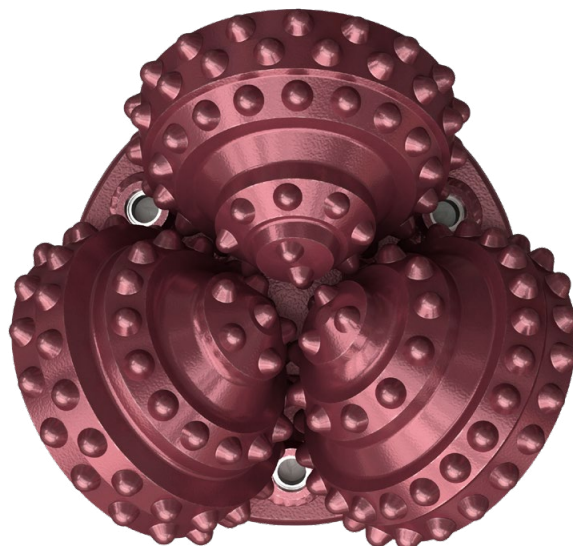
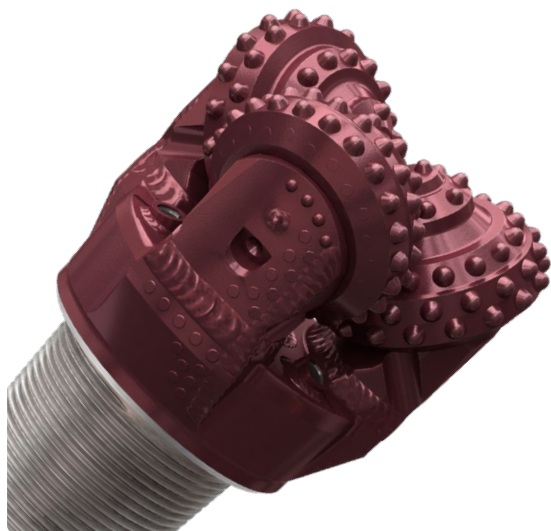


# Roller cone bit

## 9 7/8" 250,8.732



### Application.

The bit is designed for drilling of hard abrasive rock formations, e.g. granite-porphry, silicized limestone, magnetite and hematite-magnetite hard ore, ferrous, monolithic and thick quartzite, medium-grained diorite, thick garnet skarn, quartzeous gneiss, diabase and basalt, emery chlorite ore, weak pegmatite and quartzeous magnesite, most frequently found in gold, iron and granite mines.

Recommended drilling parameters for maximum efficiency of the bit: low and medium rotation speed (60-115 RPM) and axial load from 120 to 230 kN.

Rock strength range - 38 000-60 000 PSI.



### Specification

<b>Bearing support type</b>	Open rolling bearing support with air blow-through
<b>Bearing/cooling type</b>	Roller - Ball - Roller / Air cooling
<b>Shirttail protection</b>	2/3 Shirttail protection with TCIs and wear-resistant hardmetal surfacing
<b>Blow-through type</b>	Side (center) air blow-through
<b>IADC code</b>	732Y
<b>Connection thread</b>	6 7/8 REG
<b>Nozzle diameter, mm</b>	16 (installed) + spare nozzles 14, 18
<b>Bit weight, kg</b>	Net - 57,7 / Gross - 61,4 kg
<b>Cutting structure</b>	Tungsten carbide inserts
<b>Inner and nose TCIs</b>	Conical (128 TCIs)
<b>Gauge row TCIs</b>	Spheroconical (61 TCIs)
<b>Gauge bevel TCIs</b>	Flat (66 TCIs)